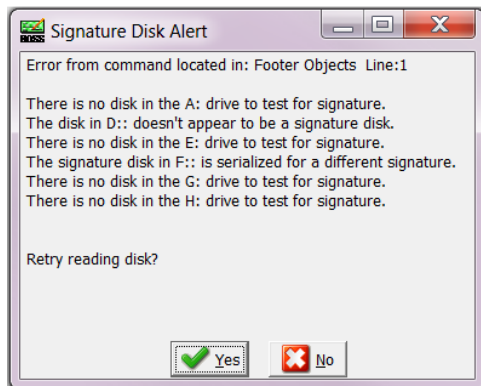


## Signature Disk Alerts

17 February 16, 2012

When using a new signature disk and PrintBoss does not find a valid signature code a Signature Disk Alert will pop-up during check processing. For example:



To correct this situation requires modification of the PrintBoss command line that directs PrintBoss to test the possible, pre-determined drives.

### Background

Wellspring Software, Inc. can create a secure, encrypted signature file that is linked to an associated media device (i.e. CD or USB). When both are present, the signature file will print on checks. The PrintBoss signature file is readable only by PrintBoss and the process is secured by several PrintBoss features.

Each PrintBoss signature is encrypted and assigned a code. The same code can be assigned to one, two or more signatures if they are to always print together. The code is also embedded on the media device.

The signature(s) will print when the following is true:


1. the code in the signature file matches the code on the associated CD or USB and
2. the CD or USB is correctly mapped to a specified drive letter.

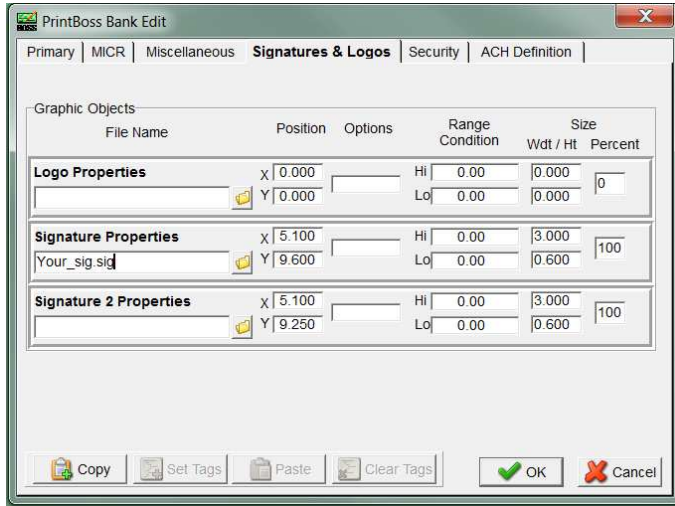
### Typical setup of Signature Files




The setup for secure signature includes indicating to PrintBoss:

1. where to find the signature file and
2. where to find the associated CD or USB.

## Indicate where to find the Signature File

Typically the signature file is placed in the PrintBoss\Logos folder. It can then be linked to a PrintBoss Bank Account Profile record on the Signatures & Logos tab of the Bank Edit screen by clicking on the  icon and browsing to PrintBoss\Logos folder.



Graphic Objects		Position	Options	Range Condition	Size		
File Name		X	Y	Hi	Lo	Wdt / Ht	Percent
Logo Properties		0.000	0.000	0.00	0.00	0.000	0
Signature Properties		5.100	9.600	0.00	0.00	3.000	100
Signature 2 Properties		5.100	9.250	0.00	0.00	3.000	100

## Indicate where to find the associated CD or USB

The PrintBoss forms have a command line which directs PrintBoss to first look to see if one or more signature files are linked to the PrintBoss Bank profile record.

The PrintBoss #Pic command indicates to PrintBoss that the signature file is to be printed at the location specified by the coordinates. The #Pic command is typically found on the Footer Objects tab of the PrintBoss form Editor.

To view or edit the #PIC command line, go to the Form Editor\Footer Objects tab and scroll down to the signature script line. In the sample script below, PrintBoss is to look to the Bank Account Profile record to retrieve the properties of the signature file. Each of the variables in the script corresponds to a value placed in the Bank Account Profile record shown above. This is the typical #PIC script for signatures:

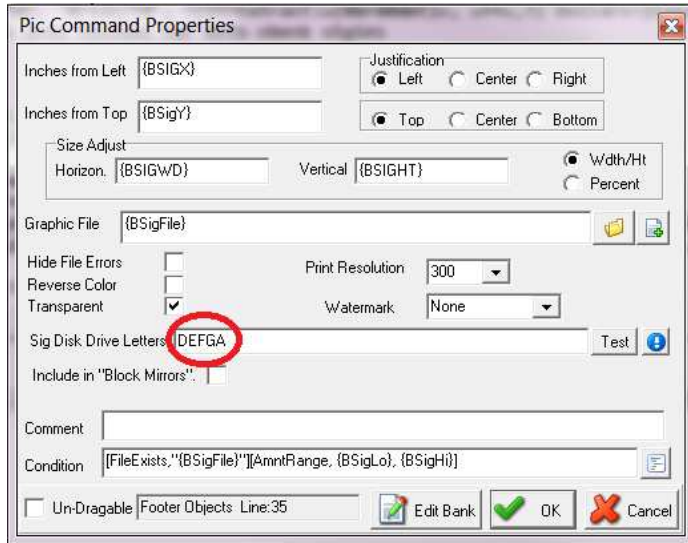
```
#[FileExists,"{BSigFile}"][AmntRange,{BSigLo},{BSigHi}]Pic{BSigX},{BSigY},"{BSigFile}","/Wdth:{BSigWD}/Hght:{BSigHT}"
```

{BSigFile} = File Name  
{BSigLo} = Range Condition Lowest value  
{BSigHi} = Range Condition Highest value  
{BSigX} = X Co-ordinate of the signature file  
{BSigY} = Y Co-ordinate of the signature file  
{BSigWD} = Adjusted Width of the signature file  
{BSigHT} = Adjusted Height of the signature file

### **NOTE:**

Older PrintBoss Forms may not have this script line. It may simply be:  
#Pic 5.361, 9.949, Your\_sig.pcx, ,,DEFGA

Double click on the signature script in the Form Editor, the Pic Command Properties box will open.



Note the 'Sig Disk Drive Letters' are DEFGA. PrintBoss will only look to devices in these drives for a valid signature code. The drive letters can be edited to include more or fewer drives.

**NOTE:**

The drive letters are entered as Upper Case letters, no spaces or commas between them.